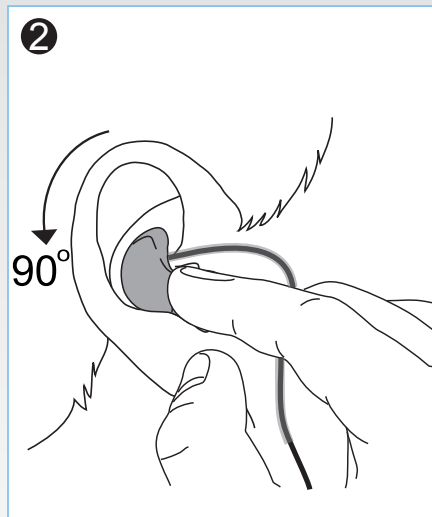


1

Hold headset before fitting

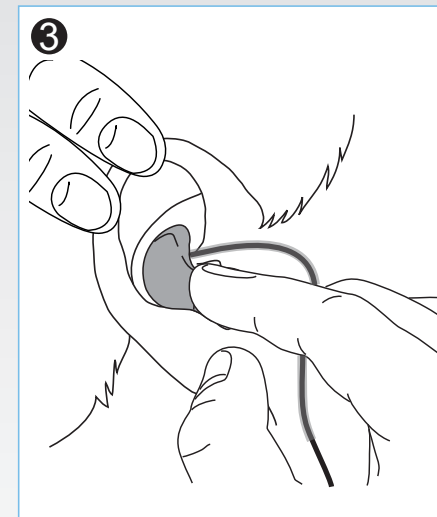
Hold the headset with your thumb and first two fingers and the loudspeaker toward your ear.



2

Place headset in ear

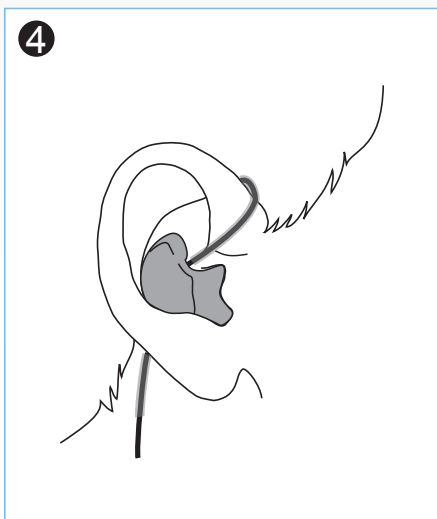
Insert the headset in your ear, while twisting the headset backwards. The BCM must touch the ear canal and should point downwards once inserted.



3

Push headset fully into ear

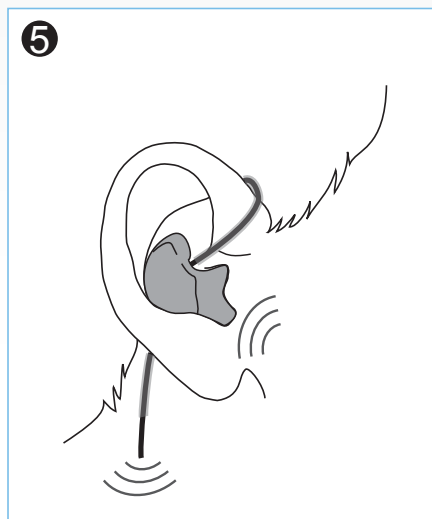
Pull ear back with your other hand and push the headset forward and into the ear canal. Wiggle ear and headset so that air in the ear canal is released. A correct fit is imperative for hearing protection (M4h / X6).



4

Place Cable Retainer behind ear

Place the Cable Retainer behind your ear to ensure the cable is held comfortably and securely over the ear.

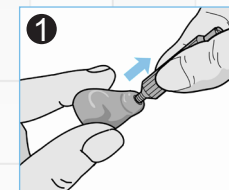


5

Test headset on radio

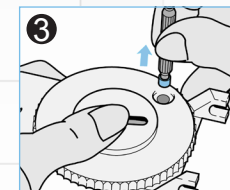
Test your voice quality by transmitting to another radio. If transmission signal is low or the headset is sitting loose, refit the headset.

Change the wax filter



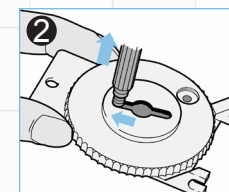
1

Remove wax filter from headset
Screw threaded end of pin (metal) into wax filter and carefully pull out.



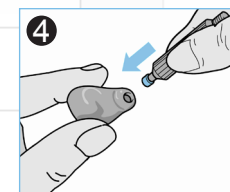
3

New wax filter from dispenser
Push non-threaded end of pin (blue) into dispenser and pull pin carefully outwards.



2

Remove the wax filter from pin
Press pin into middle of dispenser and slide sideways and into slot. Pull pin carefully outwards.



4

Insert wax filter into headset
Push new wax filter into headset and carefully pull pin out with a slight angle.